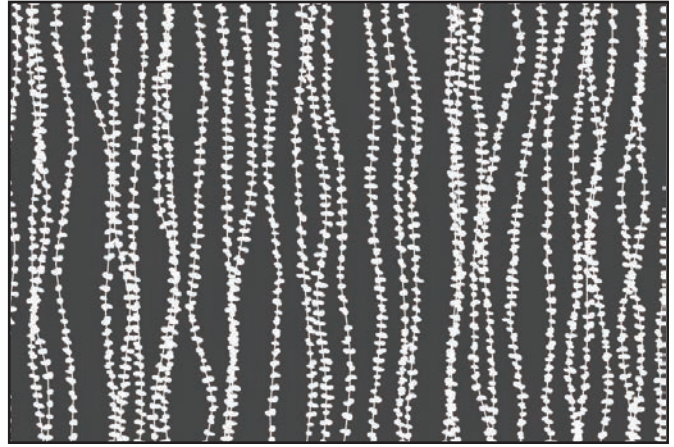
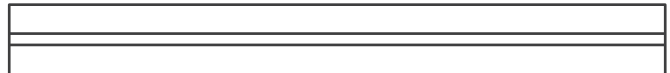


FULL SHEET PATTERN ORIENTATION

NOTE: THE ABOVE ILLUSTRATION IS FOR ORIENTATION ONLY. ACTUAL PATTERN MAY VARY FROM PATTERN SHOWN.



DETAIL 1:1



PROFILE 1:1



SWATCH

PART #: VGR8973

MATERIAL: VIVIGRAPHIX GLEAM

PATTERN: STRING OF PEARLS I (Vertical)

CONFIGURATION: REFLECT

SHEET DIMENSIONS: 60" X 120" X .3125"

(1524 mm X 3048 mm X 7.9 mm)

QTY: _____

APPROVED BY: _____

| | | | |
|--|--|--|----------|
| UNLESS OTHERWISE SPECIFIED, DIMENSIONS ARE IN INCHES | | FORMS+SURFACES ® 30 Pine Street, Pittsburgh, PA 15223 Tel(800) 451-0410 Fax(412) 781-7840 | |
| TOLERANCES (UNLESS OTHERWISE SPECIFIED): FRACTIONAL: ±1/8" ANGULAR/BEND: ±1° TWO PLACE DECIMAL: ±.030 THREE PLACE DECIMAL: ±.020 | | NAME | DATE |
| MATERIAL: VIVIGRAPHIX GLEAM | | DWN | TE |
| PATTERN: STRING OF PEARLS I | | DO NOT SCALE DRAWING | |
| WEIGHT: - | | PROPRIETARY AND CONFIDENTIAL | |
| SOURCE: - | | THE INFORMATION CONTAINED IN THIS DRAWING IS THE SOLE PROPERTY OF FORMS+SURFACES. ANY REPRODUCTION IN PART OR AS A WHOLE WITHOUT WRITTEN PERMISSION IS PROHIBITED. | |
| SCALE: N.T.S | | SIZE | DWG. NO. |
| | | B | 000 |
| | | REV | SHEET |
| | | 000 | 1 OF 1 |